



Modine Manufacturing Company 1500 DeKoven Avenue, Racine Wisconsin
PH: 262-636-1200 Fax: 800-204-6011

Modine Geothermal Technical Bulletin

Subject: Bussmann Fuse Holder

Date: 8/8/2017

To: Geothermal contractors, representatives and wholesalers

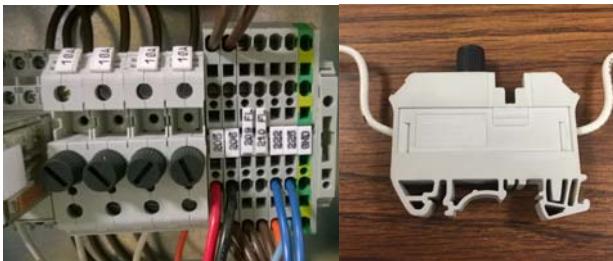
Modine recently discovered the Bussmann fuse holder used in some of our Geothermal Products can interrupt continuous power to the ECM motor or flow center.

The affected fuse holders – part number FP50280 (5H1000100000) – were used in our Geothermal Products produced between August, 2015 and June, 2017.

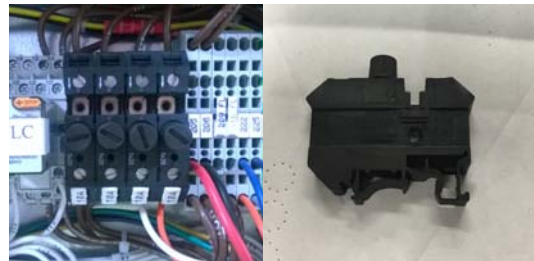
Units built during this timeframe will contain two fuse holders, unless the unit came with a domestic hot water generator, also known as a desuperheater. If so, it will contain a total of four fuse holders and fuses to protect the factory installed domestic hot water pump.

The Bussmann fuse holder is light gray, in color, and used with a 10amp fuse to protect the flow center and ECM fan blower motor. There is not an issue with the 10 amp fuses, just with the fuse holder itself. Units built between the date range, may or may not have the Bussmann fuse holder. During the same time frame, Modine also used an alternate fuse holder that does not require replacement.

Bussmann fuse holder shown below (replace):



Phoenix fuse holder shown below (do not replace):



If you find a unit with a Bussmann fuse holder, Modine recommends replacing it with the Phoenix fuse holder. Please contact Technical Service with the full model and serial number of the heat pump for a no charge Phoenix fuse holder. Again, each unit will have two fuse holders, or four for those units with the desuperheater option.

Thank you,
Modine Technical Service

Email: technicalservice@na.modine.com

Phone: (800) 828-4328